



PIGMENT RED 112

The best coatings are made with the best pigments

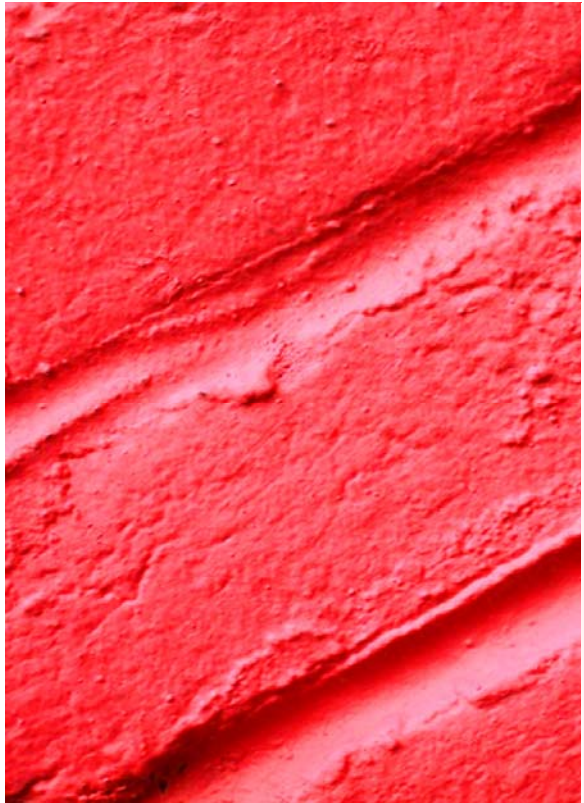
DCC 2912

- Brilliant Yellow Shade Naphthol Red
- Excellent Masstone Weatherfastness
 - Very Good Solvent Resistance
 - High Colour Strength



Dominion Colour Corporation
Working Together For Quality

ISO 9001
ISO 14001



Pigment Red 112 - DCC 2912

Chemical Class
Naphthol AS Red, CAS # 6535-46-2

Product Overview

DCC2912 is a brilliant yellow shade Naphthol AS pigment with excellent masstone weatherfastness. This product is suited for interior architectural, low cost exterior industrial, air drying and baking enamel coatings. DCC2912 has better solvent fastness than PR.3 (toluidine red) and thus can be used in more demanding applications.

Shade Indicator

Bluest

Yellowest

DCC 6005 → 7019 → 2790 → 2254 → 2222 → 7170/7354 → DCC 2912

Key Attributes

- Excellent masstone weatherfastness and lightfastness
- Excellent heat stability
- Excellent alkali and very good acid resistance

This product is supported by

- DCC's global presence
- DCC's technical service and support
- Local warehousing capabilities which ensure one-time delivery
- DCC's ability to consistently delivery quality products

Key: P = Poor, F = Fair, G = Good, VG = Very Good, E = Excellent Recommendations: 1 = Frequently Used, 2 = Limited Use, 3 = Not normally used. * Weatherometer data

APPLICATIONS	
Automotive OEM	3
Automotive Finish & Fleet	3
Agricultural & Construction Equipment	3
Oil Gas & Marine	3
Building Products	1
Architectural Latex	1



PRODUCT CHARACTERISTICS	
Shade	Yellow Shade PR.112
Weatherfastness	
• Masstone	E
• Tint	F
Lightfastness:	
• Masstone	E
• Tint	VG
Heat Stability:	E
8.5% pigmentation in aqueous acrylic emulsion (min@°C)	45@120 15@160
Resistance Properties	
• Acid Resistance	VG
• Alkali Resistance	E
• Soap	VG
• Organic Solvents	G-VG

Performance Characteristics: Colour & Performance in Coatings

Standard	Trial	Colouristics in Water-based Latex	
		Deep Tone	Light Tone
Competitive Grade A	DCC2912	Slightly darker 5-6% Strong	Slightly yellow hue 10% Strong
Competitive Grade B		Similar shade 4% Strong	Slightly yellow hue 4-5% Strong

All samples achieved Hegman reading of 7¼+ after sand mill dispersion

The information in this brochure is based on extensive testing and application experience and is believed to be a reliable indication of the results that may be expected. However, the data does not constitute a specification for the products, and is offered only as a guide to performance without guarantee or warranty of any kind. Because of the difficulties of modern colour reproduction, the shades may vary slightly from the final colour application. Since many variables have a strong influence on pigment performance, the users are encouraged to test each product in their own laboratory prior to use.



Dominion Colour Corporation
Working Together For Quality

ISO 9001
ISO 14001

www.dominioncolour.com | (416) 791-4200

Distributed by _____